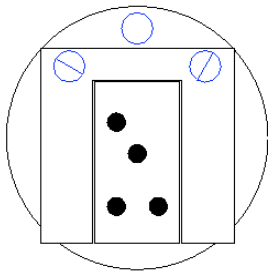


SEACAM HOT SHOE CONFIGURATION

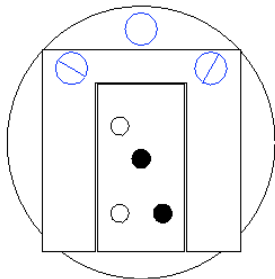
NIKON

Operating a digital camera with an underwater flash needs to adjust your hot shoe to the demand which flash you use!

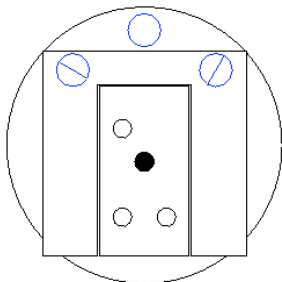
For preparing the hot shoe at your SEACAM housing you easily can remove the golden pins by pulling them out with your fingernails or a thin knife. Replacing back, you push them in again and place them in position with a pen or a thin insert-key.
(black = pins in position, white = pins removed)



i- TTL / SEAFLASH 250 digital / NIKON SB 800DX both in i-ttl mode (all i-ttl functions, ready light symbol active)



ONE NON TTL FLASH in manual mode (ready light symbol active)



TWO NON TTL FLASH in manual mode (ready light symbol not active! If you want to keep the ready light symbol, you also can cut all cables for *the right socket*, except the red (trigger) and brown (ground) on the connection board at the top of your housing.)